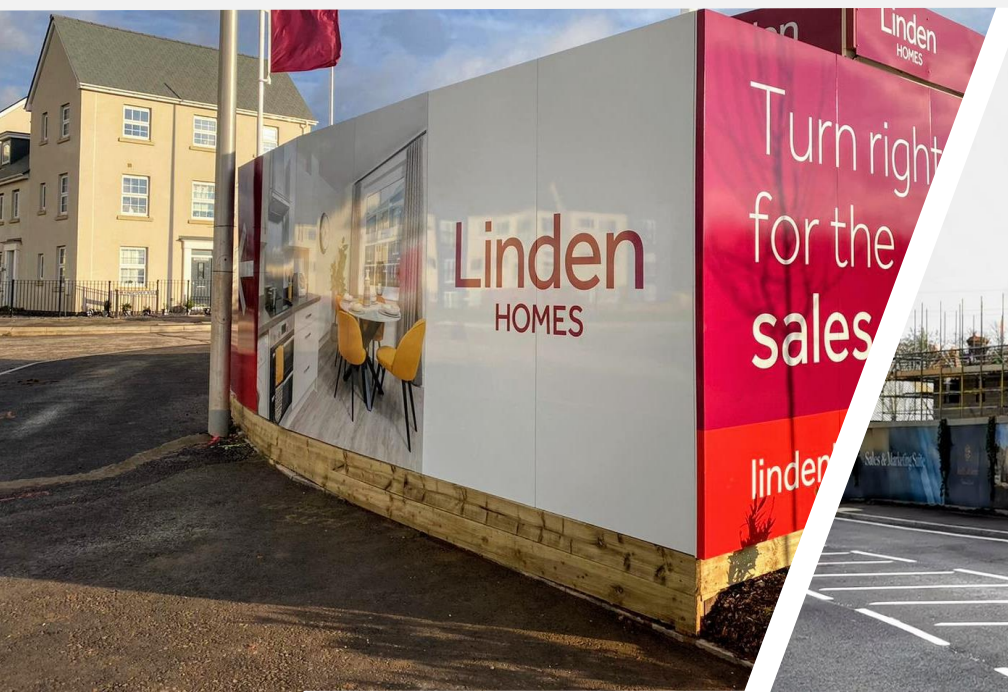




A Fresh Approach To Construction Hoarding



OUR INSPIRATION FOR CHANGE



COMMON TIMBER HOARDING DESIGNS



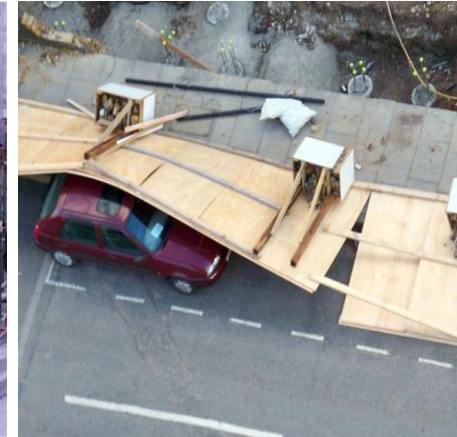
Requires painting, nailing and materials are usually all perishable that deteriorate and do not represent the high quality construction.

Health and Safety risk along with security issues. Signage panels fixed to Hoardings often eliminate Temporary Works designs.

Hoarding cannot be reused between sites.

Discarded after use not representing a green mission.

SAFETY FIRST



Perimeter hoarding is often perceived as an inexpensive **temporary solution** whilst construction is commenced on site.

In reality hoardings can be erected ranging from a minimum of 12 months to 24, a reasonable amount of time. More than enough to be affected by inclement weather and other factors like site damage, vandalism and general wear and tear.

Hoardings are usually timber that is screwed/nailed together. Some include a temporary works design – but this can be invalidated due to additional weight of signage panels.

This causes a real risk to site staff and members of the public if a section was to blow down in the wind.

Firm fined £550,000 for plywood hoarding collapse that killed couple

Sainsbury's hoardings blow into road causing crash in Redhill

Contractor fined £100k for site hoarding failure

Elderly woman injured by Holiday Inn Express building site hoarding

Firm fined after Birmingham city centre hoarding collapse

What is different about our hoarding?



- A **unique** method of production and installation boasting re-usable materials whilst incorporating the signage/ marketing messages, creating an instantly attractive appearance on site with no delay and no need to paint before adding signage.
- Structurally sound to BS standards with an engineered design including wind calculations.
- Sections can be removed quickly and reinstated by site teams for additional access.
- Our panels are completely waterproof so will not warp, crack or rot away in outdoor conditions.
- Our panels can be re-used for a multitude of signage and further hoarding applications.
- A complete package including graphic design, production, installation and removal.
- All signage, access and pedestrian gate positions can all be agreed with Marketing and Construction at initial survey stage as one supplier preventing multiple trips to site reducing cost.
- Multiple combinations of panel style and framework specification with a solution for every budget.




Hoarding Specification



GK StyleLine Hoarding



GK StyleLine - Key Product Features	
Foundation Options	In- ground or on-ground
Framework	Timber uprights with timber rail frame
Panels	Printed, laminated and packed for front fixing
Fixing method	Colour coded screws to frame from front of panels
Print	Direct UV or vinyl
Laminate	Liquid UV cured laminate with multiple finish options
Header and kicker	Printed and laminated ACM
Engineer approved design	

GK StyleLine is our solution to traditional outdated hoarding designs. Offering instant branding and an engineer approved hoarding solution at a reduced cost.



A COMPREHENSIVE PACKAGE



WE ALSO OFFER

- Vehicle and pedestrian access gates
 - Heras fencing
- Monoliths and stack signs
 - Flag poles and flags
- Site health and safety signage
 - Other external site signage

SITE SURVEY

All projects start with a full site survey.

REMOVAL

Once the hoarding is no longer required, we offer a dismantle service with or without disposal.

DESIGN AND MANUFACTURE

We create a standard template which can either be submitted to the design agency of your choice, or we can populate your pre-designed artwork.

INSTALLATION

Our specialist installation teams combine the skills of conventional fencing and graphical excellence to ensure your project is installed to the best standards.



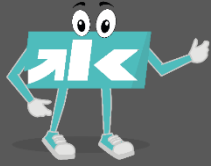
COMI
A STUNNING AND 2 BEDROOM
APARTMENT AND 2 BEDROOM HOUSES
To register your interest call
01892 883720
or visit www.paddock-wood.co.uk

GK Signs

To find out how we can Upgrade your hoarding contact us today:



Email: tom.wells@gksigns.co.uk



Phone: 01392 494044



Website: www.gksigns.co.uk



GK Signs, Unit 25 Mill Lane Industrial Estate, Caker Stream Road,
Alton, Hampshire, GU34 2QA